

Assembly and Installation

Style-Rite Columns are suitable for both new construction and for wraparound installations; the figures below have been prepared accordingly. Figures 1, 2 and 3 are common to both applications and should be closely followed for a proper installation. Figures 4a and 4b cover wraparound, while figures 5a and 5b are for new applications.

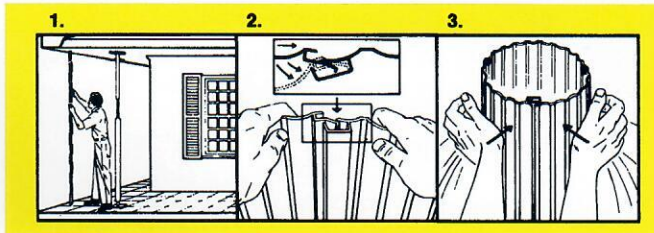
NOTE: 12" and 15" round columns do not have wraparound features.

INSTALLATION

Columns install easily and quickly, around existing columns or independently, affording added versatility. The "snap lock" feature fastens the sections and makes them fast. Packed one column per carton, caps and bases in master cartons.

Recommended installation procedures are shown below and to the right for both new construction and "wraparound" work and should be carefully followed for a suitable application.

1. Measure required height (NOTE: for new construction, add 1/4" to measured height. For wraparound installation, subtract 1/4" from measured height) and cut column staves with a hacksaw prior to assembly.
2. Assemble staves by rotating together.
3. Assemble final interlock by rapping with the heels of the hands, starting at one end of the column.

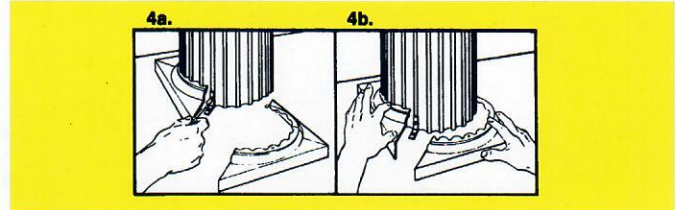


NOTE: Square column assembly instructions are basically the same as the round column. **12" round column assembly - See Instructions.**

WRAPAROUND

4a. Cut base with hacksaw along diagonal, splitting lugs on underside of base. Place 1/2 of the split base around column, so that edge is parallel to edge of structure. Plumb column and align cap and base identification mark along a single column flute. Fasten column top and bottom with two angle brackets with either screws or rivets.

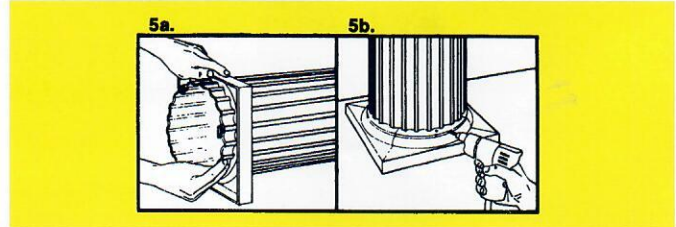
4b. Place second 1/2 of split base and cap around column and drill four 1/8" holes through base and cap and into column, in line with rib. Fasten with #8 x 1" sheet metal screws as in figure 5b.



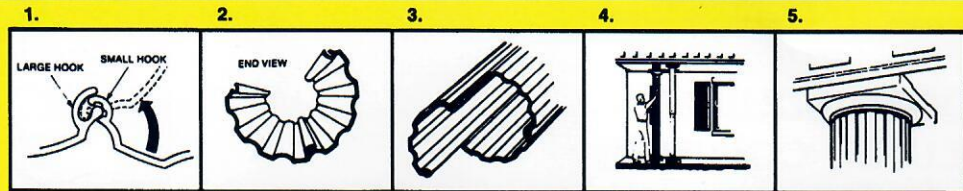
NEW CONSTRUCTION

5a. Slide cap and base on column ends. To avoid scratching of column, slide base on until bottom is flush with end of column. **NOTE:** Align square cap and base identification mark along a single column flute. Raise structure 1/2" to permit plumb installation of assembled column. Lower structure to secure column.

5b. Drill four 1/8" holes, equally spaced, through base and into column, in line with rib. Fasten with #8 x 1" sheet metal screws.



Assembly for 12" and 15" Round Column Only



Join sections together, small hooks curling into large hooks.

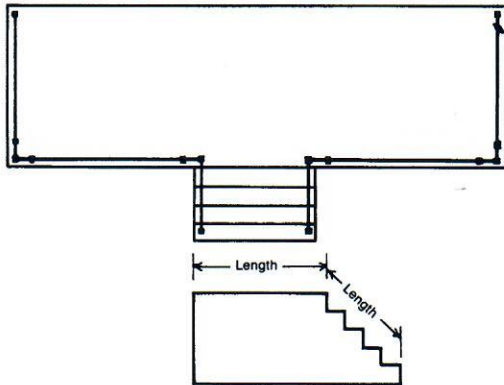
Join all sections in this way except one.

Slide final section into place, tapping gently with rubber mallet, if necessary.

Slide base and cap onto column. Set column in place and plumb with level.

Slide base and cap into finish position: remove props.

Planning Your Railing Installation



1. Adjustable rail sections may be used for either level platform or steps. Posts mount on any surface.
2. Draw line on platform to indicate where railing is to be installed. Line should be 3" or 4" in from edge of platform and side of steps.
3. Measure length of railing required in order to determine number of newel posts required.
 - a. Factory assembled sections may be combined to make up any length desired.
 - b. A 1 1/2" square newel post is used between each section.
 - c. On long railing installations use a newel post every 6 ft. for recommended strength.
4. Mark locations of end, intermediate or corner newel post. Remember if used include 9" Heart or Diamond Column.
5. Step Rail is measured from tip of porch to tip of bottom step and then subtracting 1 1/2". This will then be length of railing.
6. For steps the top and bottom rail ends can be cut to the desired angle with a hacksaw. However, optional connectors are available which will automatically adjust to the correct angle for all steps. Complete assembly and installation instructions are to be found in each rail package.

STYLE-RITE Industries

Manufacturers of Aluminum Products

P. O. Box 336 • Penn, PA 15675
1-800-789-5374

Phone 724-527-2866 Fax 724-527-3906